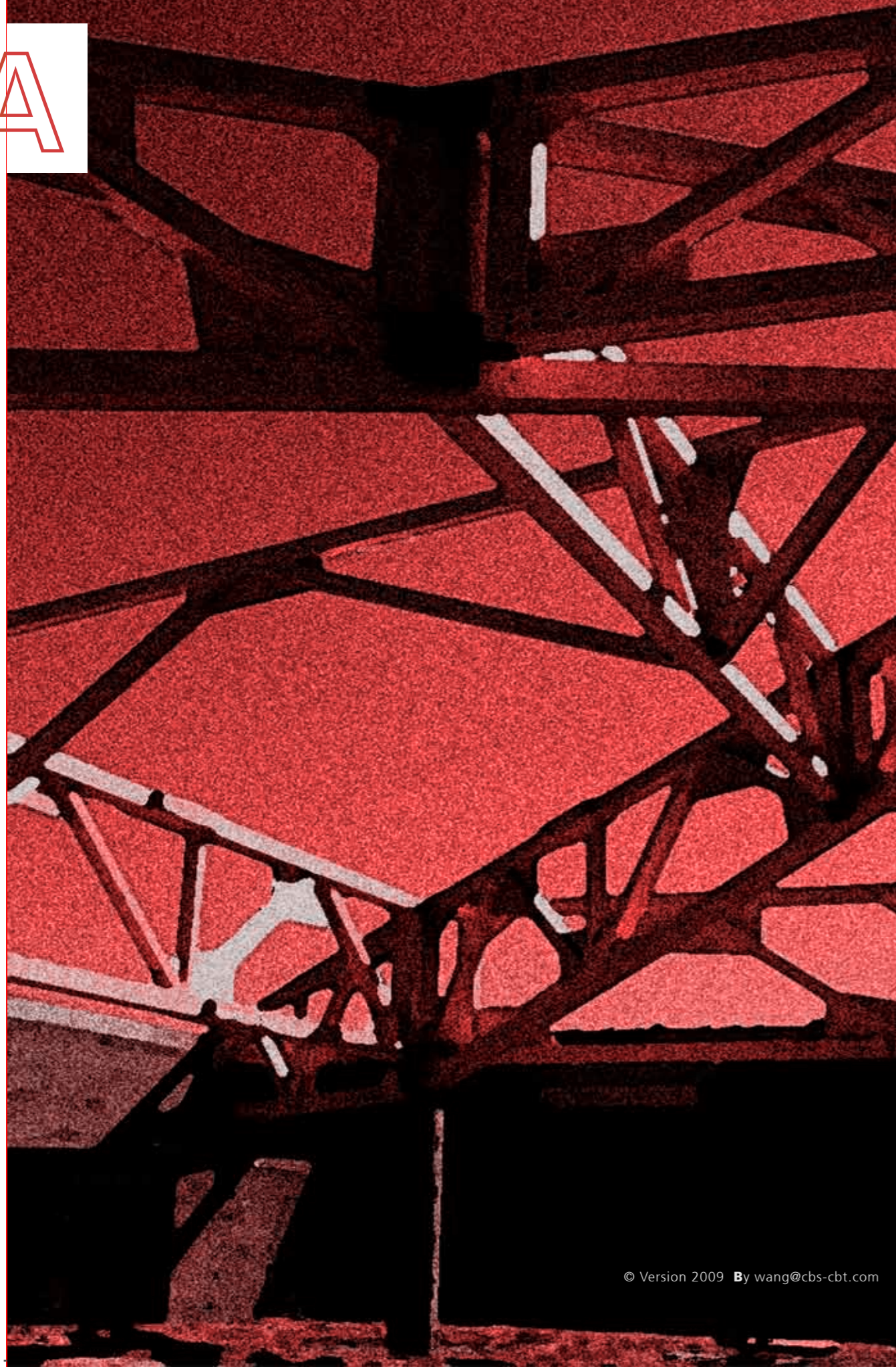


A



www.cbs-cbt.com

**C**oncepts Bois Structure, CBS in France, cooperates with the enterprise Concept Bois Technologie, CBT in Switzerland, and they form the CBS-CBT group.

These united engineer companies are specialized in designing innovative timber structures, in timber constructions, and also in new technologies related to wood engineering.

With more than ten international patents and a team of 20 engineers, this group is one of the most specialized timber engineering office, also in the international range. This situation is a result of 15 years of cooperation with the Swiss Federal Institute of Technology, Lausanne (EPFL), and with the ENSTIB, College of wood engineers in Epinal, France.

**CBS** 4, rue Longs Champs F-25140 Les Ecorces France Tel. +33.3.81.44.03.40 Fax +33.3.81.44.02.42  
**CBT** Jordils Park, rue des Jordils 40 CH-1025 St-Sulpice Switzerland Tel. +41.21.694.04.04 Fax +41.21.694.04.05

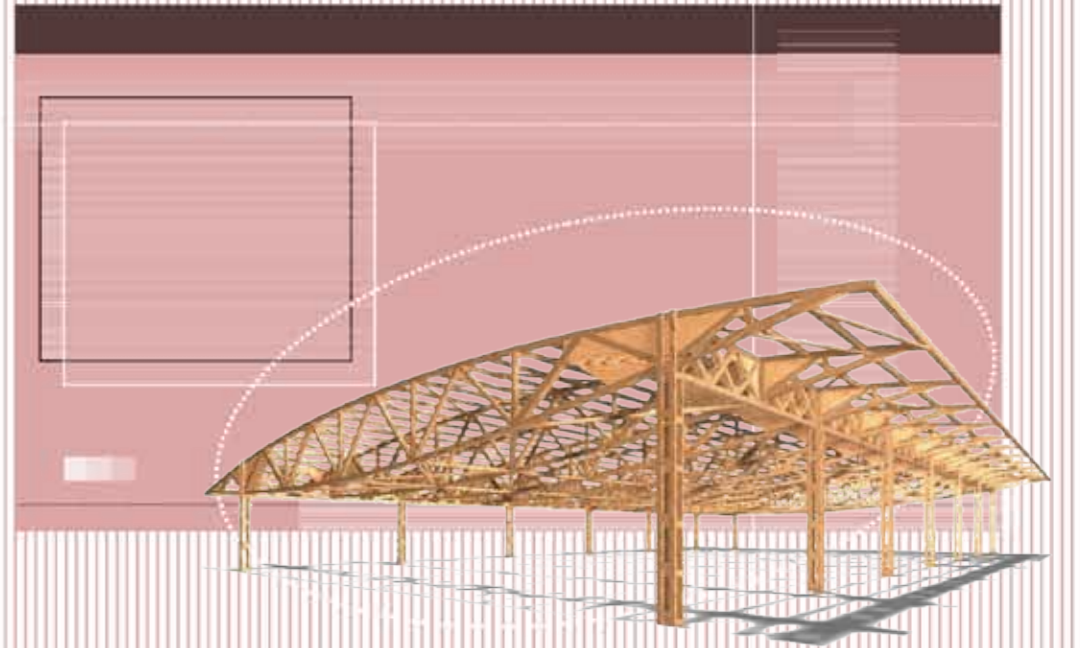
© Version 2009 By wang@cbs-cbt.com

A



# Ariane<sup>®</sup>

Truss system



20-60m

*Solution and evolution !*

© International patent and trade mark © version 2009 www.cbs-cbt.com

conceptsboisstructure

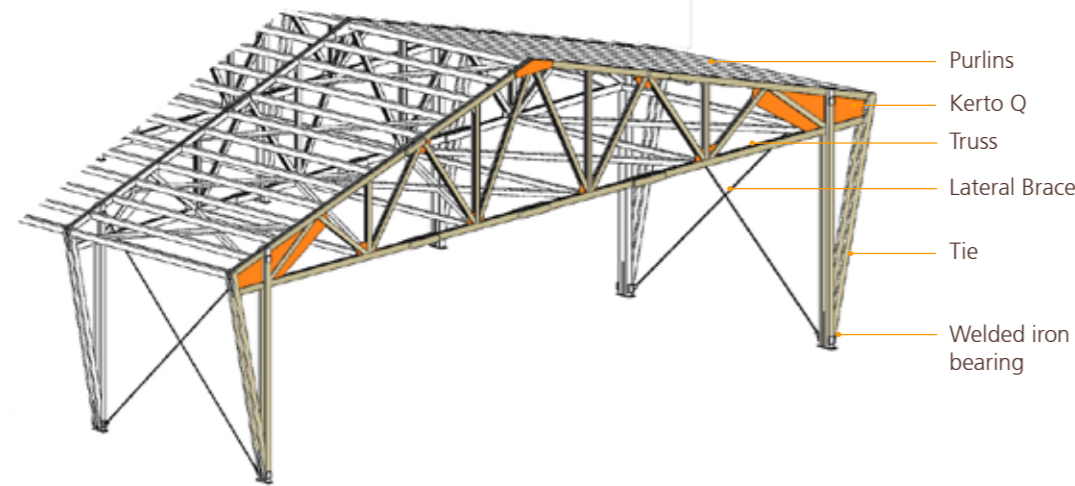


conceptboistechnologie

## The truss Ariane



is a new type of structural timber system for commercial, industrial or agricultural buildings with large span from 20 to 60m. Truss are composed of dimensional lumber, layered and reinforced using laminated veneer lumber pieces.



■ Axonometry of the Ariane truss system

CHARACTERISTIC	VALUE	UNIT	Ariane 3	Ariane 5	
Clear span	20 - 60	m			
Boards cross section	60/80-120/260	mm	1 central reinforcing panel + 2 layers of dimensional lumber (1 on each side)	1 central reinforcing panel + 4 layers of dimensional lumber (2 on each side)	Layers
Dead load	18 - 20	kg/m <sup>2</sup>		2 central reinforcing panels + 3 layers of dimensional lumber	
Truss spacing	5 - 10	m			
Timber strength class	C22 - C30	--			
Fire resistance	30 - 90	mn			
Storage of CO <sub>2</sub>	36 - 40	kg/m <sup>2</sup>			
Area/wood volume	20 - 30	m <sup>2</sup> /m <sup>3</sup>			Cross section



## Projects



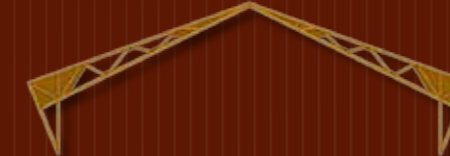
## Details



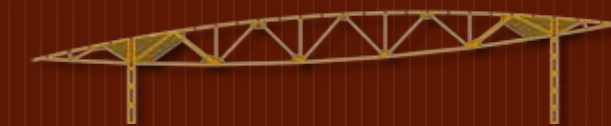
Gable truss



Two-hinged truss



Three-hinged truss



Lenticular truss



GATHERING HALL  
Switzerland 1999



SAWMILL  
France 2001



AGRICULTURAL BUILDING  
Switzerland 2003



AGRICULTURAL BUILDING  
Switzerland 2003



SUPERMARKET  
Italy 2004



TIMBER SAWMILL  
France 2008

Raw material:  
Dimensional  
lumber from  
local suppliers